



Welcome to ENL Parent Orientation, 2015



ENL services are provided at the following schools:



Abbey Lane
Elementary
School



Northside
Elementary
School



Summit Lane
Elementary
School



Jonas Salk
Middle School



MacArthur
High School

Levittown Schools ENL Teachers 2015/2016:

● **Abbey Lane Elementary School:**

Mrs. Mary Akers



Ms. Mirna Hughes



Mrs. Michelle Romano



Ms. Jessica Wimmer



Levittown Schools ENL Teachers 2015/2016:

○ Northside Elementary School:

Mrs. Carrie Bogacki



Mrs. Ellen Opell



Ms. Jessica Wimmer



Levittown Schools ENL Teachers 2015/2016:

◎ Summit Lane Elementary School:

Mrs. Kerri Hewitt



Mrs. Carol Rimler



Mrs. Sarita Gradiscaj



Levittown Schools ENL Teachers 2015/2016

⦿ Jonas E. Salk Middle School:

Mrs. Linora Ortega



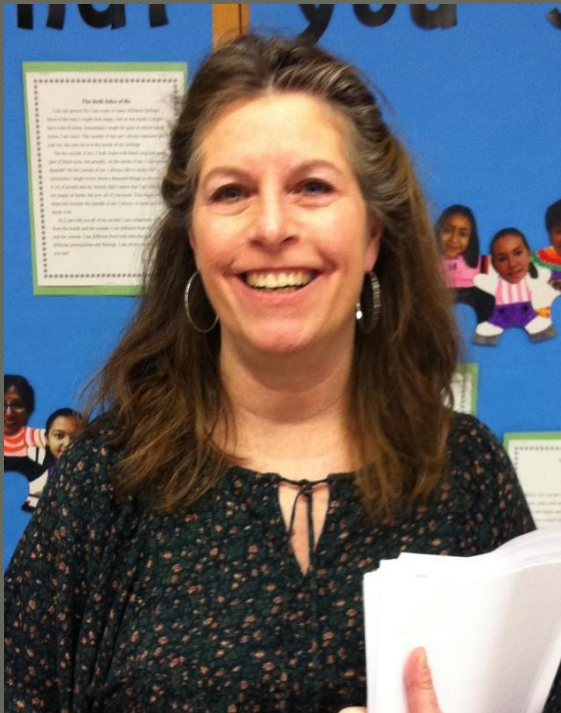
Mrs. Marie Capizzano



Levittown Schools ENL Teachers 2015/2016:

◉ MacArthur High School:

Mrs. Pini Churgin



Ms. Denise Borge
(MacArthur & Wisdom Lane)



ENL Program Goals:

- Our goal is for all ENL students to progress in the four modalities of English (listening, speaking, reading, and writing) in order to achieve a score of commanding on the New York State English as a Second Language Achievement Test (NYSESLAT), which indicates proficiency in the English language.
- In turn, this will promote student progress in the academic content areas.

Elementary School Tips:

- Elementary School Homework:
 - Homework is given every day, but usually not on Fridays.
 - Check your child's agenda book and take-home folder everyday.
 - If possible, have an older sibling help your child with their homework.
 - Sit with children during homework.





Elementary School Tips:

● Elementary School Attendance:

- Children have to be to school no later than 9:10 a.m.
- If your child is going to be absent, please call the school nurse.
- Abbey Lane Nurse's Office: (516)434-7400
- Northside Nurse's Office: (516) 434-7500
- Summit Lane Nurse's Office: (516) 434-7525





Elementary School Tips:

- **Elementary School Lunch & Snack:**
- Children may buy or bring lunch to school
- If buying lunch, please remember to bring money everyday.
- Children will be given lunch if they forget their money, but it must be paid back.
- Children should bring a drink and a snack everyday.
- Since some children have a later lunch period, it is important that they eat breakfast every morning.

- *If you are having trouble paying for lunch, your child may be eligible for a reduced or free lunch. Please contact your school's main office for more information.

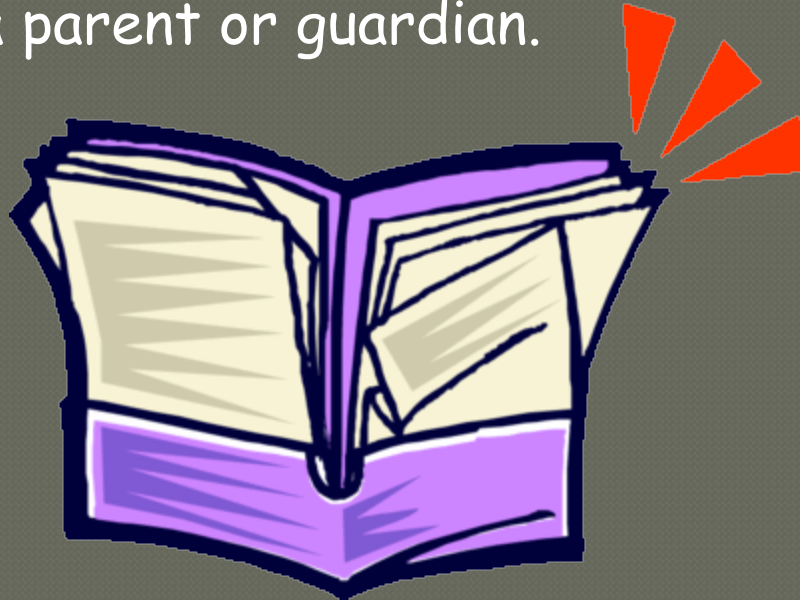
- **Please be aware that many students have food allergies, including but not limited to peanuts. **PLEASE CONTACT YOUR CHILD'S CLASSROOM TEACHER TO LEARN IF YOUR CHILD IS IN A PEANUT-FREE CLASSROOM.**



Elementary School Tips:

● Student Folders:

- Check your child's folders everyday.
- Take out papers everyday.
- Return papers each day that need to be signed or completed by a parent or guardian.



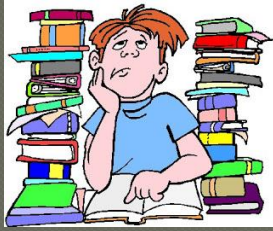


Middle School Tips:

● Salk Website:

- Go to www.levittownschools.com and select 'schools'. Click on Jonas Salk Middle School.
- The Salk webpage will tell you if it is Day 1 or Day 2. Your child's Day 1 schedule will differ from their Day 2 schedule (for example, they may have gym on day 1, and art on day 2).
- The Parent Portal has your child's grades.





Middle School Tips:

- Homework & Tests:
 - Always check that your child has completed their homework!
 - It will reinforce what your child learned in their classes that day, and help them learn English faster.
 - ENL extra help and homework help is available after school.
 - Students can also ask their Math, Science, and Social Studies teachers for extra help.
 - Tests can be confusing and stressful, but don't worry; we will prepare your child and give them extra time to finish!



Middle School Tips:

Field Trips & Physicals:



- This year, we hope to visit Fire Island, the Bronx Botanical Gardens, the Adams Playhouse at Hofstra University, the Tenement Museum, the Museum of Natural History, and the Metropolitan Museum of Art.
- Please let your child's ENL teacher know right away if you're having trouble paying for a field trip. We will help you.
- You may get a call from the nurse if your child needs a physical or immunizations. In addition, your child may get a physical at school if they wish to participate in a school sport.



Middle School Tips:

● Don't forget to...

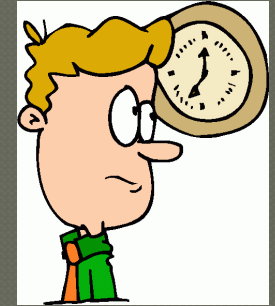
- BE ON TIME! School starts at 7:57. If your child is late 3 times, he or she will have afterschool detention.
- Students must always have gym clothes in their gym lockers—they must change their clothes for gym class.
- Encourage your children to join clubs, and get involved in sports!
- 6th graders can play intramural sports.
- 7th & 8th graders can play team sports.
- Late buses leave at 4:00 & 5:00 everyday.
- If your child is going to be absent, please call the Attendance Office (516) 434-7350.





High School Tips:

● High School Attendance:



- Be on time. Classes start at 7:27.
- If students are more than 15 minutes late, it counts as an absence.
- If students are less than 15 minutes late on three separate occasions, it equals one absence.
- Any high school student with more than 20 absences during the school year will NOT receive credit for that course.
- If your child is going to be absent, please call the Attendance Office (516) 434-7225.





High School Tips:

● High School Policies:

- Cell phone use is prohibited in MacArthur High School.
- Students are not allowed to wear hats in school.
- Students may buy or bring lunch. If any student is having financial difficulties, he or she may be eligible for a reduced or free lunch.



State and Local Assessments

● All students:

- ELA grades 3-8 (1 year exemption for new entrants to the country)
- Math grades 3-8 (no exemptions)
- Science grades 4 & 8 (no exemptions)
- Regents Exams grades 9-12
 - English, Math, Social Studies, Foreign Languages

● ENL students:

- NYSITELL
- NYSESLAT

Important Information for All:

● NYSITELL:

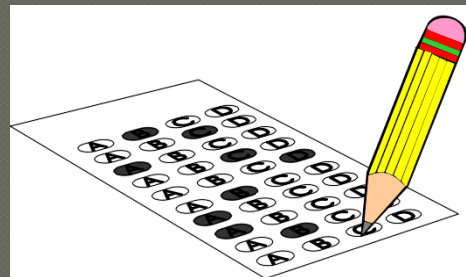
The New York State Identification Test for English Language Learners.



- The NYSITELL is the initial identification test for ENL students.
- It can only be given once, and it determines if a child qualifies for ENL services.
- If your child qualifies for ENL services, their NYSITELL score will determine if they are an Entering, Emerging, Transitioning, Expanding, or Commanding ENL student.

Important Information for All:

- **Elementary NYSITELL:**
The New York State Identification Test for English Language Learners.
- Entering and Emerging elementary ENL students receive 2 periods of ENL daily.
- Transitioning and Expanding elementary ENL students receive 1 period of ENL daily.
- Commanding ENL students will receive appropriate support.



CR Part 154-2 (K-8) English as New Language (ENL) Units of Study and Staffing Requirements

All ENL classes, including Integrated and Stand-alone offer home language support.

ENGLISH PROFICIENCY LEVEL	ENTERING (Beginning)	EMERGING (Low Intermediate)	TRANSITIONING (Intermediate)	EXPANDING (Advanced)	COMMANDING (Proficient)
ENL INSTRUCTIONAL TIME (MINIMUM)	2 units of study <i>per week</i> (360 min.)	2 units of study <i>per week</i> (360 min.)	1 unit of study <i>per week</i> (180 min.)	1 unit of study <i>per week</i> (180 min.)	Former ELLs must continue to receive services for an additional two years
STAND-ALONE ENL	1 unit of study in ENL (180 min.)	.5 unit of study in ENL (90 min.)			
INTEGRATED ENL	1 unit of study in ENL/ELA (180 min.)	1 unit of study in ENL/ELA (180 min.)	.5 unit of study in ENL/ELA (90 min.)	1 unit of study in ENL/ELA or other Core Content Area (180 min.)	
FLEXIBILITY		.5 unit of study can be STAND-ALONE ENL or INTEGRATED ENL/Core Content Area (90 min.)	.5 unit of study can be STAND-ALONE ENL or INTEGRATED ENL/Core Content Area (90 min.)		.5 unit of study per week of INTEGRATED ENL in ELA/Core Content Area, or other approved Former ELL services for two additional years*
TOTAL	<i>360 minutes per week</i>	<i>360 minutes per week</i>	<i>180 minutes per week</i>	<i>180 minutes per week</i>	
STAFFING/ PERSONNEL	STAND-ALONE ENL K-12 Certified ESOL teacher		INTEGRATED ENL – 1 DUALY CERTIFIED TEACHER ESOL and Common Branch (K-6) or Content Area (7-8) teacher who holds both certifications INTEGRATED ENL – 2 INDIVIDUALLY CERTIFIED TEACHERS (CO-TEACHING) A certified ESOL teacher and a K-6 certified elementary school teacher A certified ESOL teacher and a 7-8 certified content area teacher (ELA, Math, Science, or Social Studies)		
The maximum allowable grade span for grouping instruction in grades K-12 English as a New Language or Bilingual Education classes is two contiguous grades, except for English Language Learners in a Special Education class, as defined by section 200.1(uu) of this Title. All programs must be provided during the school day.					

*Other services that are approved by the NYS Commissioner that monitor and support the student's language development and academic progress.

Core Content Area shall mean ELA, Math, Science, and Social Studies. One unit of study = 180 minutes of instruction per week per year.

Updated May 6, 2015

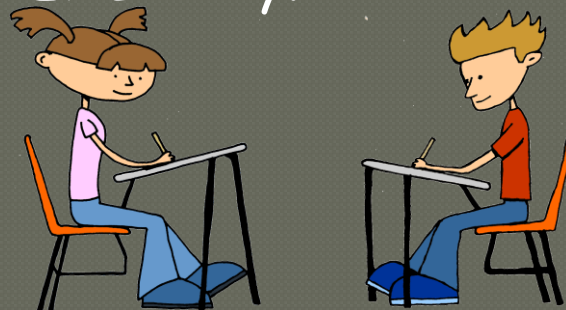


Important Information for All:

- Secondary NYSITELL:

The New York State Identification Test for English Language Learners.

- Secondary ENL students who are Entering receive 2 periods of ENL daily and 1 integrated ENL period.
- Secondary ENL students who are Emerging receive 2 periods of ENL daily (1 stand alone, 1 integrated).
- Secondary ENL students who are Transitioning and Expanding receive 1 period of ENL daily. This is an integrated class.



CR Part 154-2 (9-12) English as New Language (ENL) Units of Study and Staffing Requirements

All ENL classes, including Integrated and Stand-alone offer home language support.

ENGLISH PROFICIENCY LEVEL	ENTERING (Beginning)	EMERGING (Low Intermediate)	TRANSITIONING (Intermediate)	EXPANDING (Advanced)	COMMANDING (Proficient)
ENL INSTRUCTIONAL TIME (MINIMUM)	3 units of study <i>per week</i> (540 min.)	2 units of study <i>per week</i> (360 min.)	1 unit of study <i>per week</i> (180 min.)	1 unit of study <i>per week</i> (180 min.)	Former ELLs must continue to receive services for an additional two years
STAND-ALONE ENL	1 unit of study in ENL (180 min.)	.5 unit of study in ENL (90 min.)			
INTEGRATED ENL	1 unit of study in ENL/ELA (180 min.)	1 unit of study in ENL/ELA (180 min.)	.5 unit of study in ENL/Core Content Area (90 min.)	1 unit of study in ENL/Core Content Area (180 min.)	
FLEXIBILITY	1 unit of study can be STAND-ALONE ENL instruction or INTEGRATED ENL in Core Content Area (180 min.)	.5 unit of study can be STAND-ALONE ENL or INTEGRATED ENL/Core Content Area (90 min.)	.5 unit of study can be STAND-ALONE ENL or INTEGRATED ENL/Core Content Area (90 min.)		.5 unit of study per week of INTEGRATED ENL in ELA/Core Content Area, or other approved Former ELL services for two additional years*
TOTAL	<i>540 minutes per week</i>	<i>360 minutes per week</i>	<i>180 minutes per week</i>	<i>180 minutes per week</i>	
AWARDING CREDITS	STAND-ALONE ENL Elective credit is awarded upon passing each corresponding STAND-ALONE ENL unit of study		INTEGRATED ENL Core Content Area credit is awarded upon passing each corresponding ENL unit of study in ELA, Math, Science, or Social Studies		
STAFFING/ PERSONNEL	STAND-ALONE ENL K-12 Certified ESOL Teacher		INTEGRATED ENL – 1 Dually Certified Teacher ESOL or Content Area (7-12) teacher who holds both certifications INTEGRATED ENL – 2 INDIVIDUALLY CERTIFIED TEACHERS (CO-TEACHING) A certified ESOL teacher and a 7-12 certified Content Area teacher		

The maximum allowable grade span for grouping instruction in grades K-12 English as a New Language or Bilingual Education classes is two contiguous grades, except for English Language Learners in a Special Education class, as defined by section 200.1(uu) of this Title. All programs must be provided during the school day.

*Other services that are approved by the NYS Commissioner that monitor and support the student's language development and academic progress. Core Content Area shall mean ELA, Math, Science, and Social Studies.

Updated May 6, 2015

Ways to Exit the ENL Program:

ELL EXIT CRITERIA

SUBPARTS 154-1 & 154-2 ADOPTED REGULATION

Exit criteria has expanded to allow qualified students to exit ELL status by:

- OPTION 1) Scoring at the Proficient/Commanding level on the NYSESLAT [154-2.3(m)(1)(i)]
- OPTION 2) Scoring at the Advanced/Expanding level on the NYSESLAT,
-and-
➤ 3+ on a grade 3-8 ELA Assessment,
-or-
➤ 65 + on the Regents Exam in English
[154-2.3(m)(1)(ii)]
- OPTION 3) Please see Areas of Pending Regulation:
Students with Disabilities. [154-2.3(m)(2)]

Important Information for All:

○ NYSESLAT:

The New York State English as a Second Language Achievement Test



- Each spring ALL ENL students take this exam.
- The exam consists of multiple tests that assess ENL students' abilities to speak, listen, read, and write in the English language.
- The results of this exam will determine if and how many ENL classes your child requires.
- Students can test Entering, Emerging, Transitioning, Expanding and Commanding.

Important Information for All:

- The Common Core Learning Standards:
 - The Common Core state standards are for all K–12 students.
 - These are a set of standards that will help all children learn the same skills in English and Mathematics throughout New York State.
 - These standards guide teacher instruction and prepare students for college and beyond.
 - In your ENL packets, you will find more specific information about the Common Core and websites you refer to for more information.



ENL and the Common Core Learning Standards:

The ENL program will provide services to support our English Language Learners in their classrooms to help with academic language in the content areas.

ENL teachers will help students with Common Core lessons by gearing lessons to their proficiency levels.

<https://www.engageny.org/parent-family-library>

The screenshot shows the top navigation bar of the EngageNY website. The background is dark blue. On the left, the logo "engage^{ny}" is displayed in white. To the right of the logo are links for "EngagedVoices", "FAQ", "About", "Help", and "Newsletter". Further right is a search bar with the word "Search" and a magnifying glass icon. Below the navigation bar is a row of six icons, each with a corresponding label: a graduation cap for "Common Core", an apple for "Teacher/Leader Effectiveness", a circular arrow for "Data Driven Instruction", a television for "Video Library", a person with a speech bubble for "Professional Development", and a stylized tree for "Parents and Families". The "Parents and Families" icon and label are highlighted with a lighter background. At the bottom left, there is a small "e^{ny}" logo followed by a right-pointing arrow and the text "Parents And Families".

Important Information for All:

- The Parent Portal:
- The Parent Portal allows parents/guardians to access student related information about their children.
- Go to www.levittownschools.com and click on "Parent Portal" on the left side of the district webpage.
- Follow the prompts to create or access your account.
- Once you have set up your account, you can verify and check your child's attendance and grades.
- *If you do NOT have access to a computer at home, please let your child's ENL teacher know.



Important Information for All:

- Immunizations Required for ALL students:
 - All students enrolled in school in New York State are required to follow the state's immunization schedule.
 - If your child does not have the proper immunizations, they will **NOT BE ALLOWED** to attend school.
 - If your child is missing immunizations, the nurse will contact you.
 - All students in New York State must be vaccinated for the following illnesses:
 - Diphtheria, Tetanus, and Pertussis
 - Polio
 - Measles, Mumps, and Rubella (German Measles)
 - Hepatitis B
 - Varicella (Chickenpox)



2015-2016 New York State Immunization Requirements:

Vaccines	Prekindergarten (Day Care, Head Start, Nursery or Pre-k)	Kindergarten through Grade 1	Grades 2 through 5	Grades 6 through 7	Grades 8 through 12
Diphtheria and Tetanus toxoid-containing vaccine and Pertussis vaccine (DTaP/DTP/Tdap) ²	4 doses	5 doses or 4 doses if the 4th dose was received at 4 years of age or older or 3 doses if the series is started at 7 years of age or older		3 doses	
Tetanus and Diphtheria toxoid-containing vaccine and Pertussis vaccine booster (Tdap) ³	Not applicable			1 dose	
Polio vaccine (IPV/OPV) ⁴	3 doses	4 doses or 3 doses if the 3rd dose was received at 4 years of age or older	3 doses	4 doses or 3 doses if the 3rd dose was received at 4 years of age or older	3 doses
Measles, Mumps and Rubella vaccine (MMR) ⁵	1 dose	2 doses			
Hepatitis B vaccine ⁶	3 doses	3 doses or 2 doses of adult hepatitis B vaccine (Recombivax) for children who received the doses at least 4 months apart between the ages of 11 through 15 years of age			
Varicella (Chickenpox) vaccine ⁷	1 dose	2 doses	1 dose	2 doses	1 dose
Haemophilus influenzae type b conjugate vaccine (Hib) ⁸	1 to 4 doses	Not applicable			
Pneumococcal Conjugate vaccine (PCV) ⁹	1 to 4 doses	Not applicable			

Important Information for All:

- Physical Exams for ALL students:
 - Before starting certain grades, students are required to have a physical exam.
 - Students must get a physical exam for grades **K, 2, 4, 7,** and **10**.



Important Information for All:

Field Trips:

- There are several field trips throughout the year. Students will not be allowed to attend a field trip without a signed permission slip.
- If you are having trouble paying for a field trip, please let an ENL teacher know right away. We can help. Your child cannot be excluded from a field trip if they cannot pay.



Important Information for All:

○ New School Phone Numbers:

- All of the schools in Levittown have new phone numbers as of last year. The numbers are as follows:

- Abbey Lane School: (516) 434-7400
- Northside School: (516) 434- 7500
- Summit Lane School: (516) 434-7525
- Salk Middle School: (516) 434-7350
- Wisdom Lane Middle School: (516) 434-7300
- MacArthur High School: (516) 434-7225
- Gerald Claps Career & Technical Center: (516) 434-7110
- Transportation: (516) 434-7585



LAST, BUT NOT LEAST:

Do you have any
questions for us?...



If you ever have any questions or concerns at any time, please call your child's ENL teacher. We are always here to help.